

# FLOOR PLAN

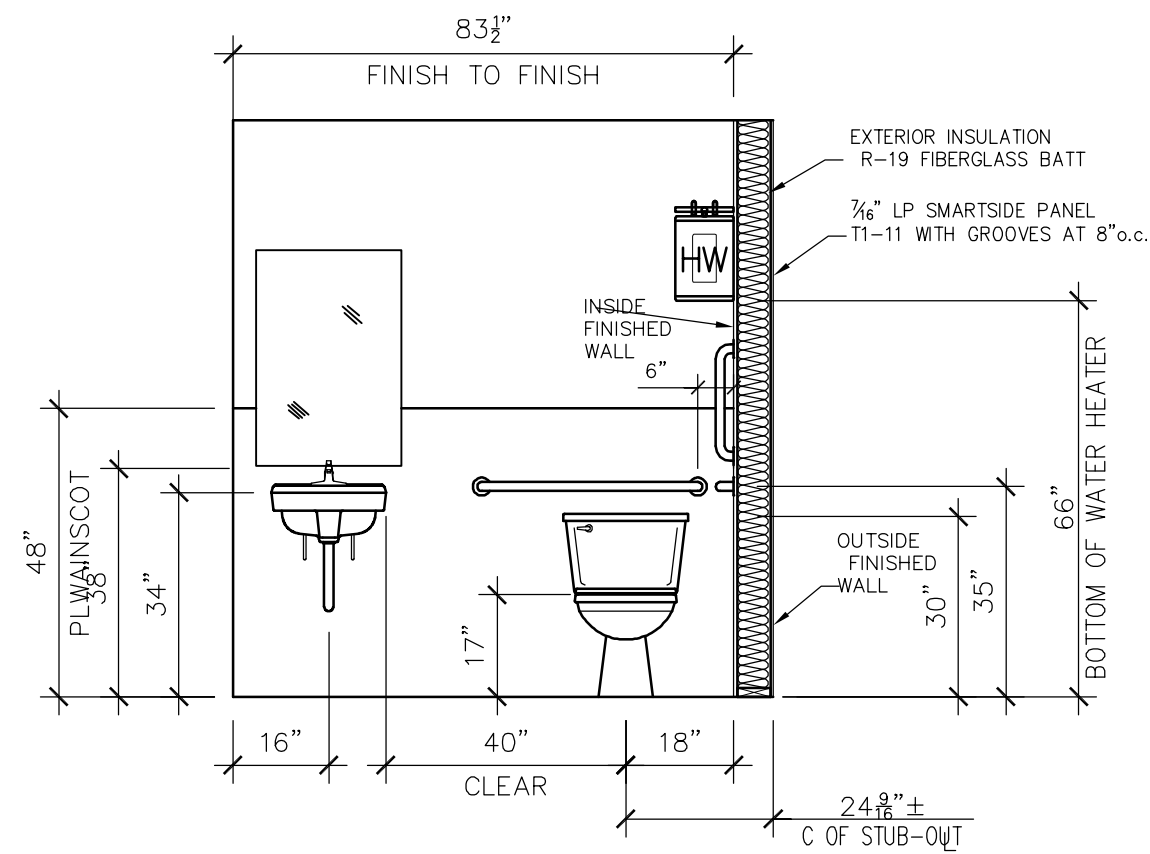
1/4" = 1'-0"

	QTY.	SIZE	DESCRIPTION	LOCK	REMARKS
<b>DOORS</b>					
EXTERIOR DOOR HARDWARE TO HAVE #626 SATIN CHROMIUM PLATED FINISH. (1)	1	3'0" x 6'8"	INSULATED GALV. STEEL W/ WELDED STEEL JAMB WEATHERSTRIPPING DEFAULT .60 U-FACTOR	SCHLAGE CYLINDER	SS BBH-NRP HINGES PAINT FINISH LCN 1461 CLOSER VON DUPRIN 22L PANIC
INTERIOR DOOR HARDWARE TO HAVE #605 BRIGHT BRASS FINISH. INTERIOR DOOR TO BE 1 3/4" THICK. (2)	1	3'0" x 6'8"	SOLIDCORE VINYLWRAP w/WOOD JAMB	LC2276 PRIVACY	STANDARD HINGES VWCO FINISH
<b>WINDOWS</b>	2	48 x 48	HORIZ. SLIDER-DUAL GLAZE-LOW 'E' ATRIUM- WHITE VINYL FINISH-MINI BLIND- SOLAR BRONZE TINT NFRC .36 U-FACTOR - SHADING COEFFICIENT .38		

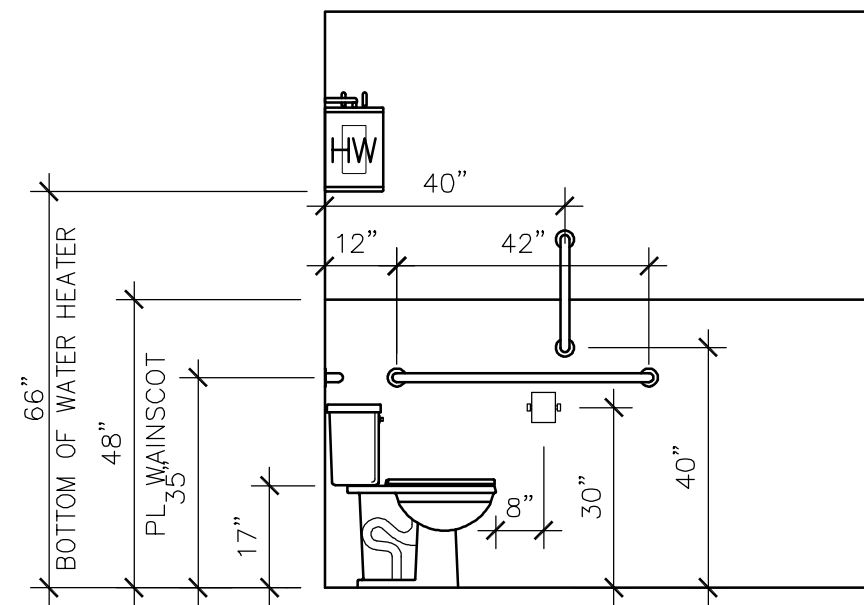
**PRELIMINARY**  
NOT FOR CONSTRUCTION

DATE	REVISION	BY	COPYRIGHT 2009, BLAZER INDUSTRIES, INC. THIS MATERIAL IS THE EXCLUSIVE PROPERTY OF BLAZER INDUSTRIES, INC. AND SHALL NOT BE REPRODUCED, USED, OR DISCLOSED TO OTHERS EXCEPT AS AUTHORIZED BY THE WRITTEN PERMISSION OF BLAZER INDUSTRIES.	P.O. BOX 489 ■ AUMSVILLE, OR 97325-0489	MODULAR 28 X 32 WA GOLD	<i>Classroom / H.C.R.R. for:</i> <b>Lease Unit</b> EQUIPMENT SUPPLY LLC	Approved for Const: File Copy: Drawn By: NS Start Date: 11-20-08	Job No: <b>D8210</b> <b>A-1</b>
------	----------	----	-------------------------------------------------------------------------------------------------------------------------------------------------------------------------------------------------------------------------------------------	-----------------------------------------	-------------------------------	-------------------------------------------------------------------------------	---------------------------------------------------------------------------	------------------------------------

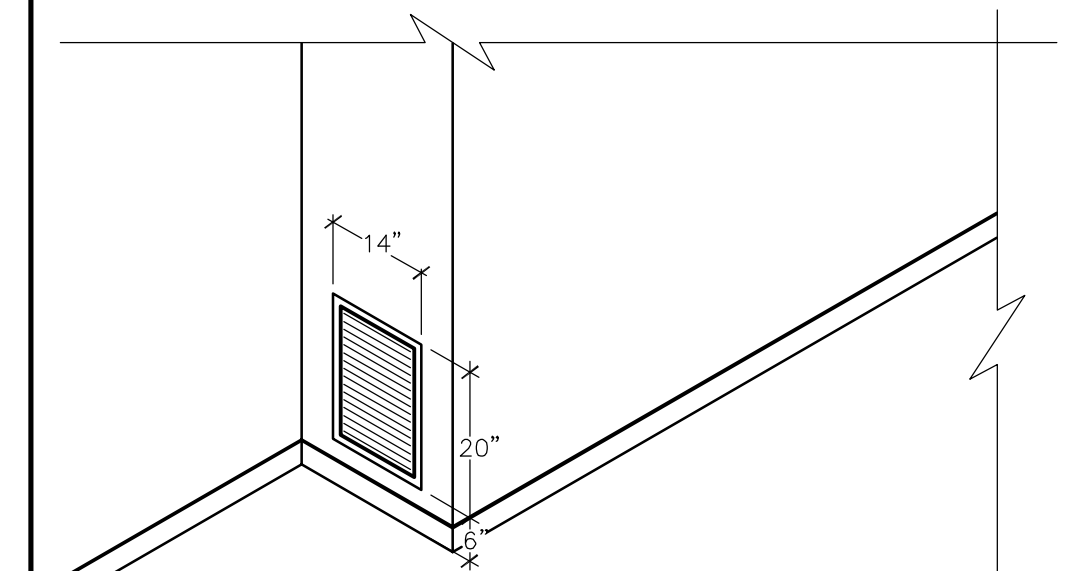
Washington



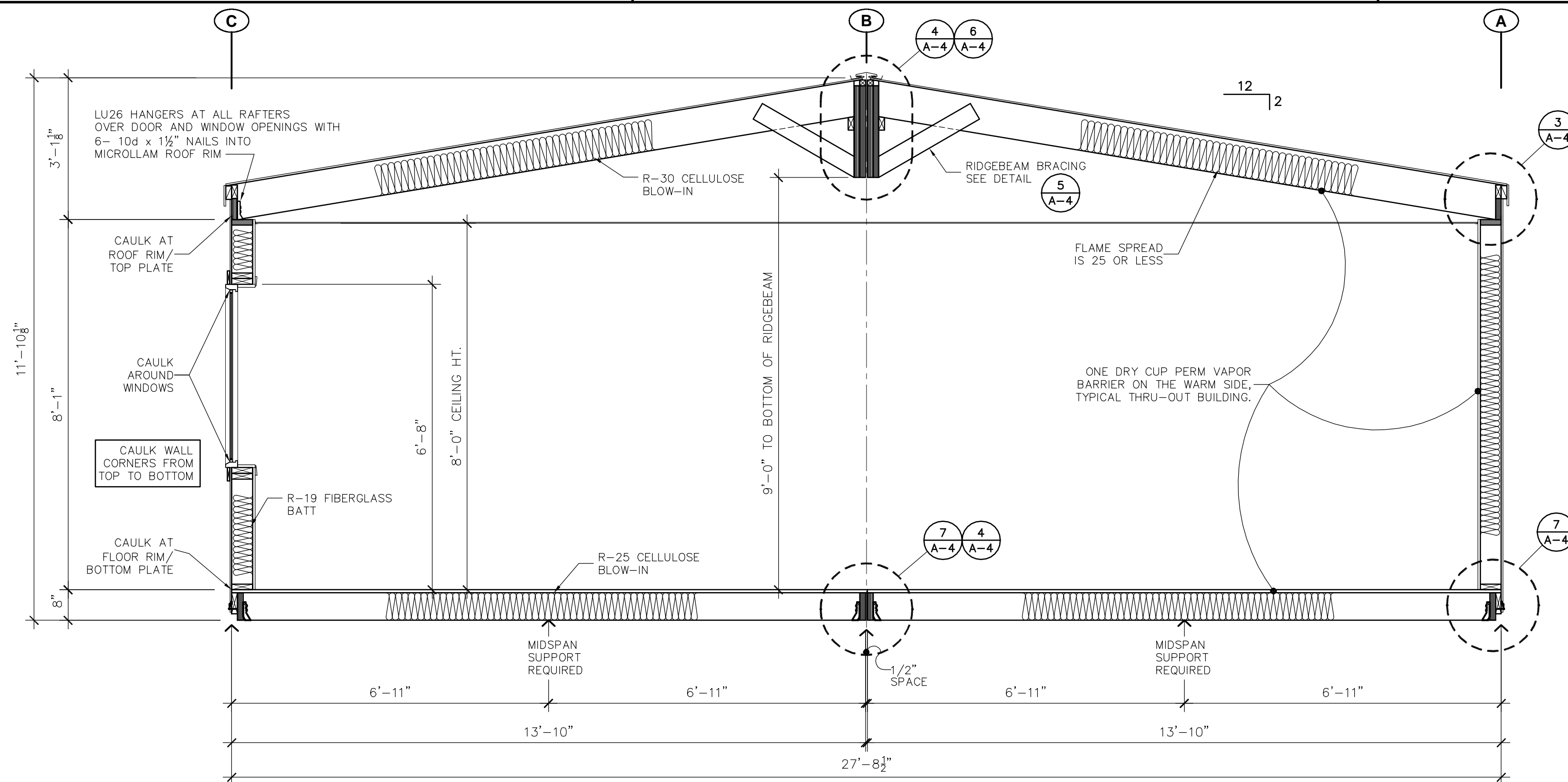
**A RESTROOM ELEVATION**  
3/8" = 1'-0"



**B RESTROOM ELEVATION**  
3/8" = 1'-0"



**C HVAC R.A.G. ELEVATION**  
1/2" = 1'-0"



**SECTION - A A**  
1/2" = 1'-0"

**PRELIMINARY**  
NOT FOR CONSTRUCTION

DATE	REVISION	BY

COPYRIGHT 2009, BLAZER INDUSTRIES, INC. THIS MATERIAL IS THE EXCLUSIVE PROPERTY OF BLAZER INDUSTRIES, INC. AND SHALL NOT BE REPRODUCED, USED, OR DISCLOSED TO OTHERS EXCEPT AS AUTHORIZED BY THE WRITTEN PERMISSION OF BLAZER INDUSTRIES.

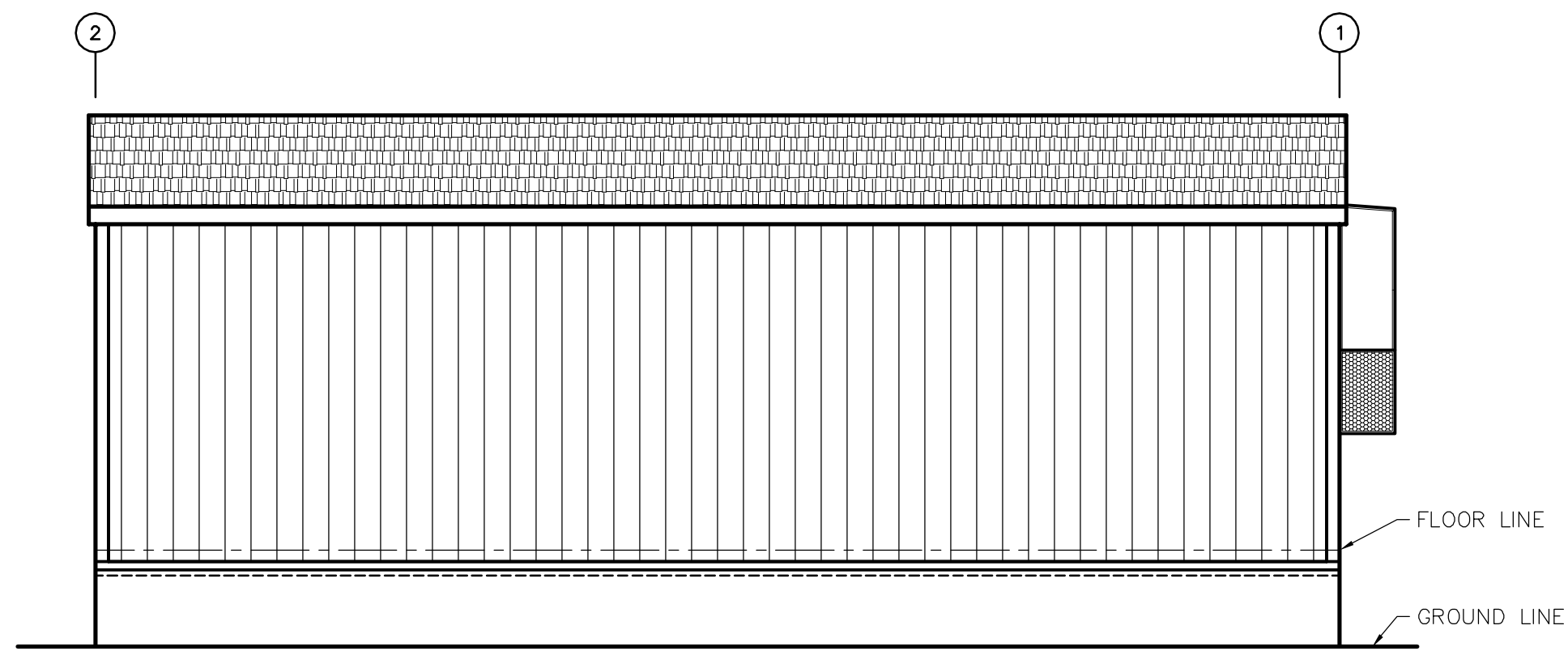


MODULAR  
28 X 32  
WA GOLD

Classroom / H.C.R.R. for:  
**Lease Unit**  
EQUIPMENT SUPPLY LLC

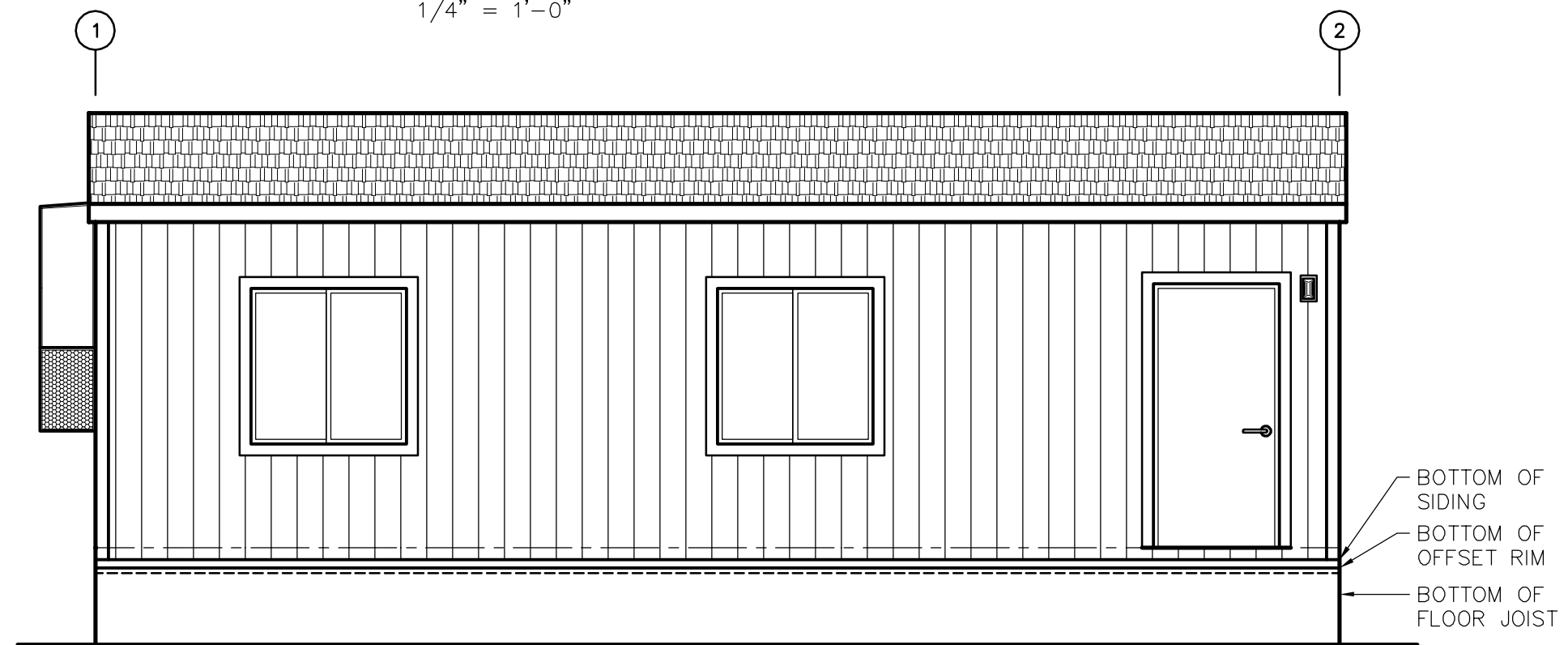
Approved for Const:  
File Copy:  
Drawn By: NS  
Start Date: 11-20-08  
Washington

Job No: **D8210**  
**A-2**



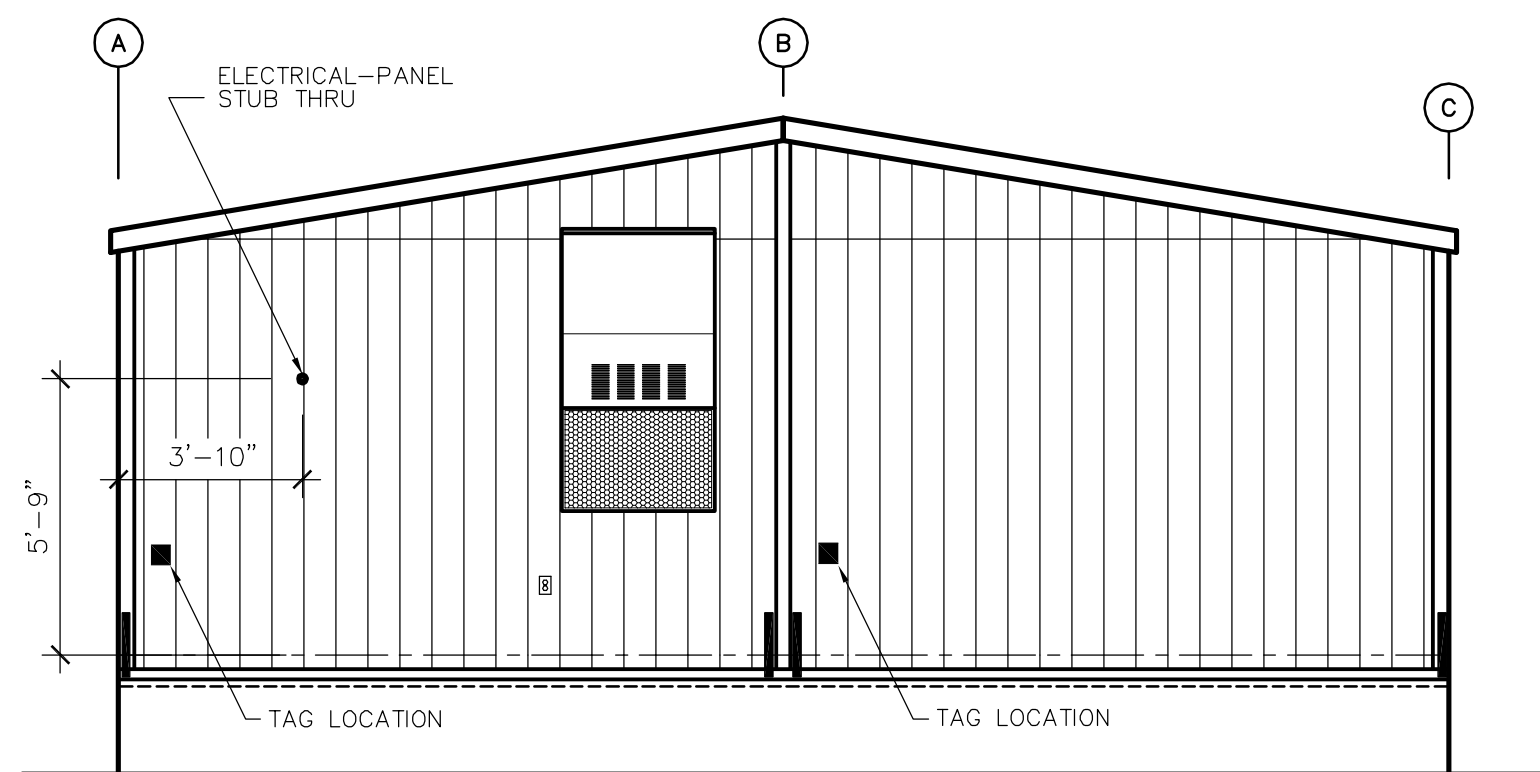
**WALL 'A' ELEVATION**

1/4" = 1'-0"



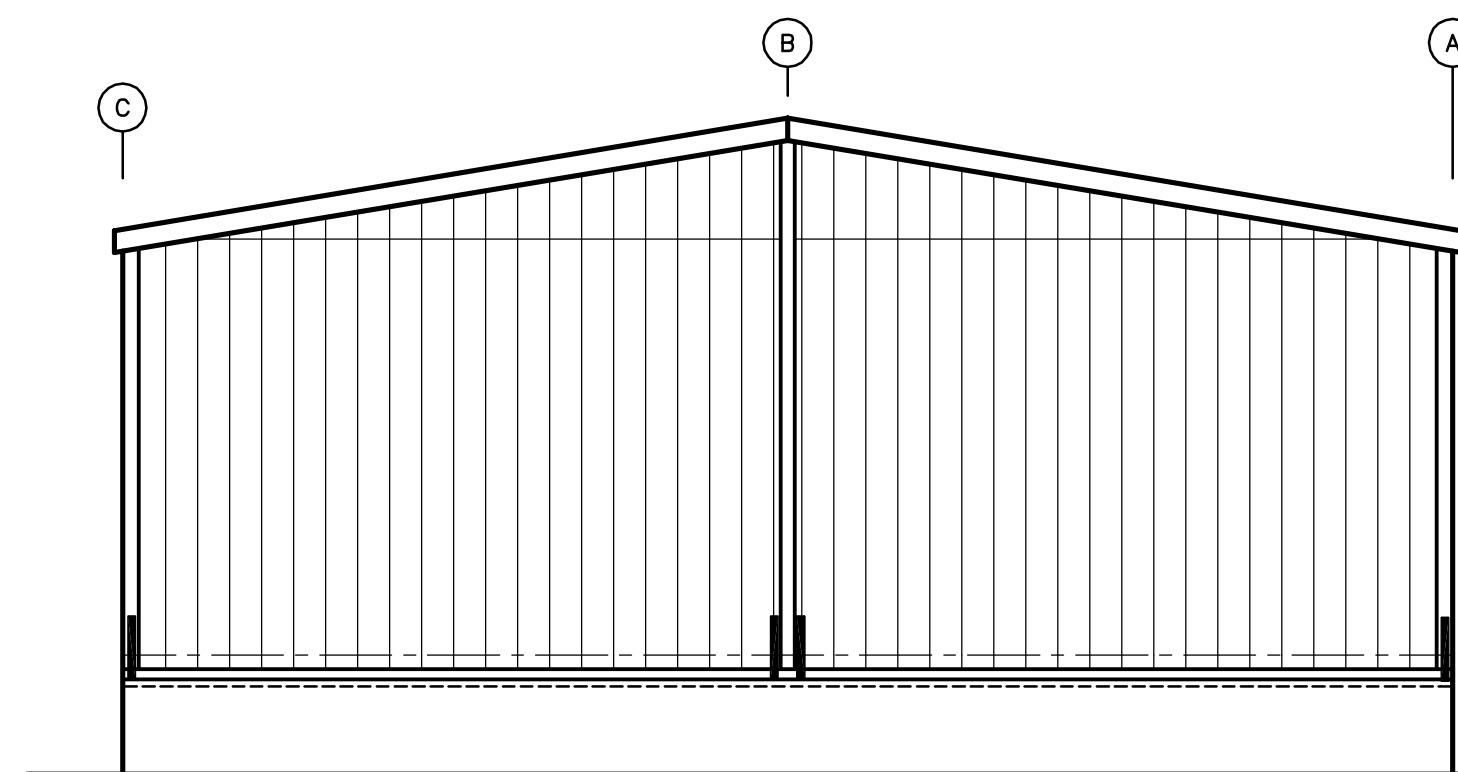
**WALL 'C' ELEVATION**

1/4" = 1'-0"



**WALL '1' ELEVATION**

1/4" = 1'-0"



**WALL '2' ELEVATION**

1/4" = 1'-0"

**PRELIMINARY**  
NOT FOR CONSTRUCTION

DATE	REVISION	BY

COPYRIGHT 2009, BLAZER INDUSTRIES, INC. THIS MATERIAL IS THE EXCLUSIVE PROPERTY OF BLAZER INDUSTRIES, INC. AND SHALL NOT BE REPRODUCED, USED, OR DISCLOSED TO OTHERS EXCEPT AS AUTHORIZED BY THE WRITTEN PERMISSION OF BLAZER INDUSTRIES.



MODULAR  
28 X 32  
WA GOLD

Classroom / H.C.R.R. for:  
**Lease Unit**  
EQUIPMENT SUPPLY LLC

Approved for Const:  
File Copy:  
Drawn By: NS  
Start Date: 11-20-08

Job No: **D8210**  
**A-3**