

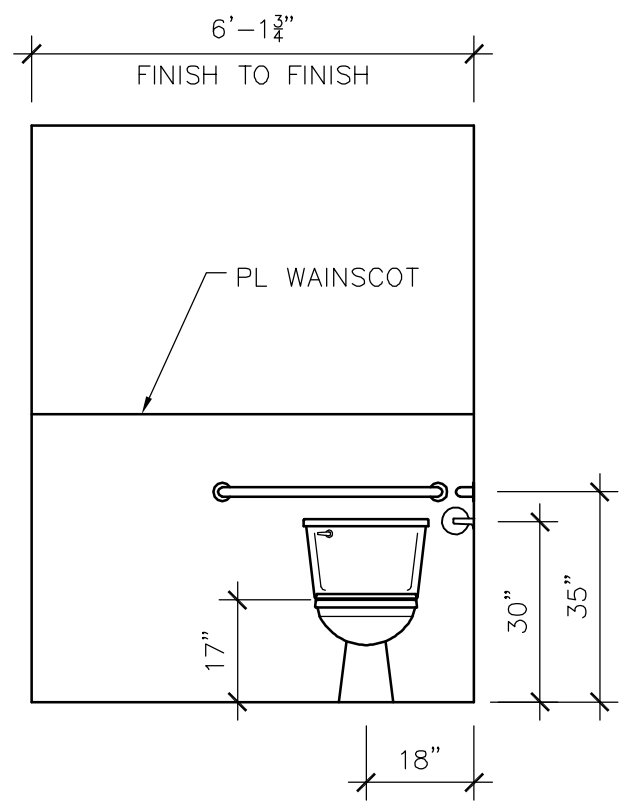
FLOOR PLAN
1/4" = 1'-0"

	QTY.	SIZE	DESCRIPTION	LOCK	REMARKS
DOORS	①	3'0" x 6'8"	INSULATED GALV. STEEL w/ WELDED STEEL JAMB & WEATHERSTRIPPING	SCHLAGE CYLINDER	S.S. BBR'G NRP HINGES PAINT FINISH LCN 1461 CLOSER VON DUPRIN 22L PANIC
	②	3'0" x 6'8"	HOLLOWCORE VINYLWRAP w/ WOOD JAMB	A40L PRIVACY	STANDARD HINGES VWCO FINISH
	③	3'0" x 6'8"	HOLLOWCORE VINYLWRAP w/ WOOD JAMB	A10L PASSAGE	STANDARD HINGES VWCO FINISH
WINDOWS	4	48 x 48	HORIZONTAL SLIDER - DUAL GLAZE - LOW "E" ATRIUM - WHITE VINYL FINISH - SOLAR BRONZE TINT - NFRC .360 U-FACTOR - SHADING COEFFICIENT .38		

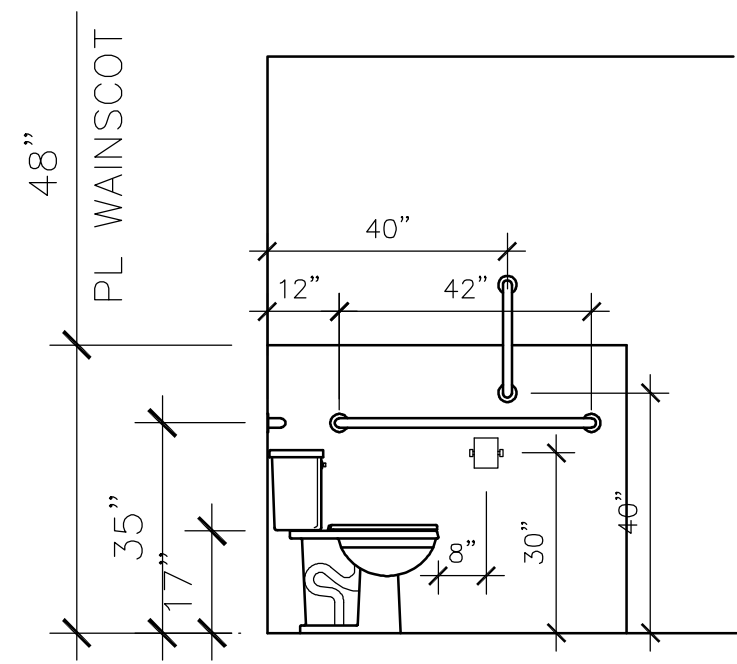
PRELIMINARY
NOT FOR CONSTRUCTION

DATE	REVISION	BY	COPYRIGHT 2009, BLAZER INDUSTRIES, INC. THIS MATERIAL IS THE EXCLUSIVE PROPERTY OF BLAZER INDUSTRIES, INC. AND SHALL NOT BE REPRODUCED, USED, OR DISCLOSED TO OTHERS EXCEPT AS AUTHORIZED BY THE WRITTEN PERMISSION OF BLAZER INDUSTRIES.	P.O. BOX 489 ■ AUMSVILLE, OR 97325-0489	MODULAR 28 x 64 WA GOLD	DAYCARE for: LEASE UNIT EQUIPMENT SUPPLY LLC	Approved for Const: File Copy: Drawn By: NS Start Date: 11-25-08	Job No: D8201
------	----------	----	--	---	-------------------------------	--	---	-------------------

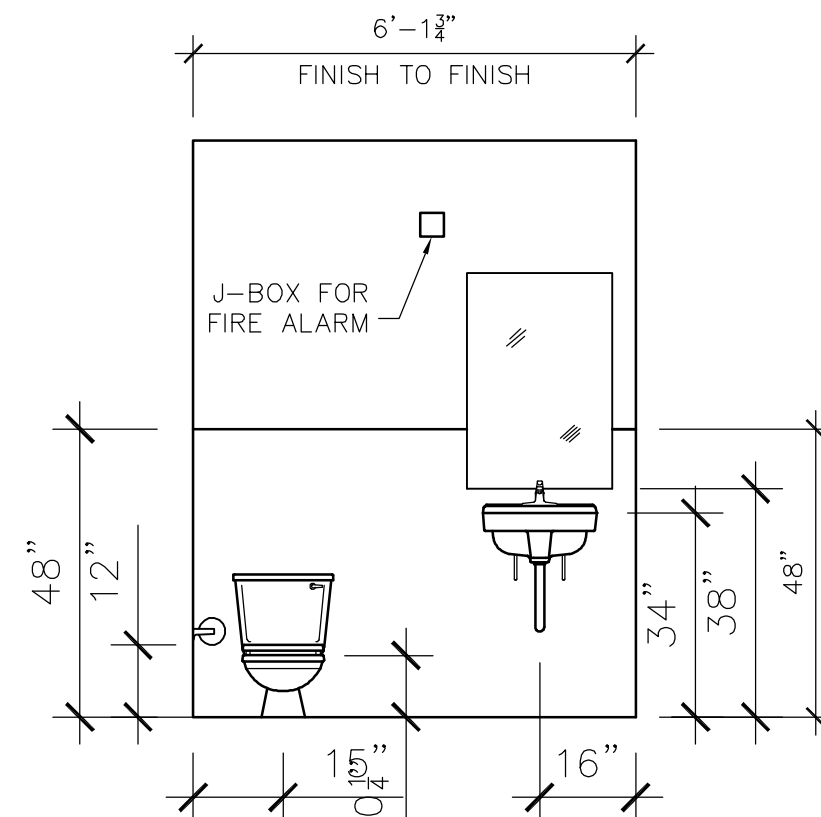
Washington



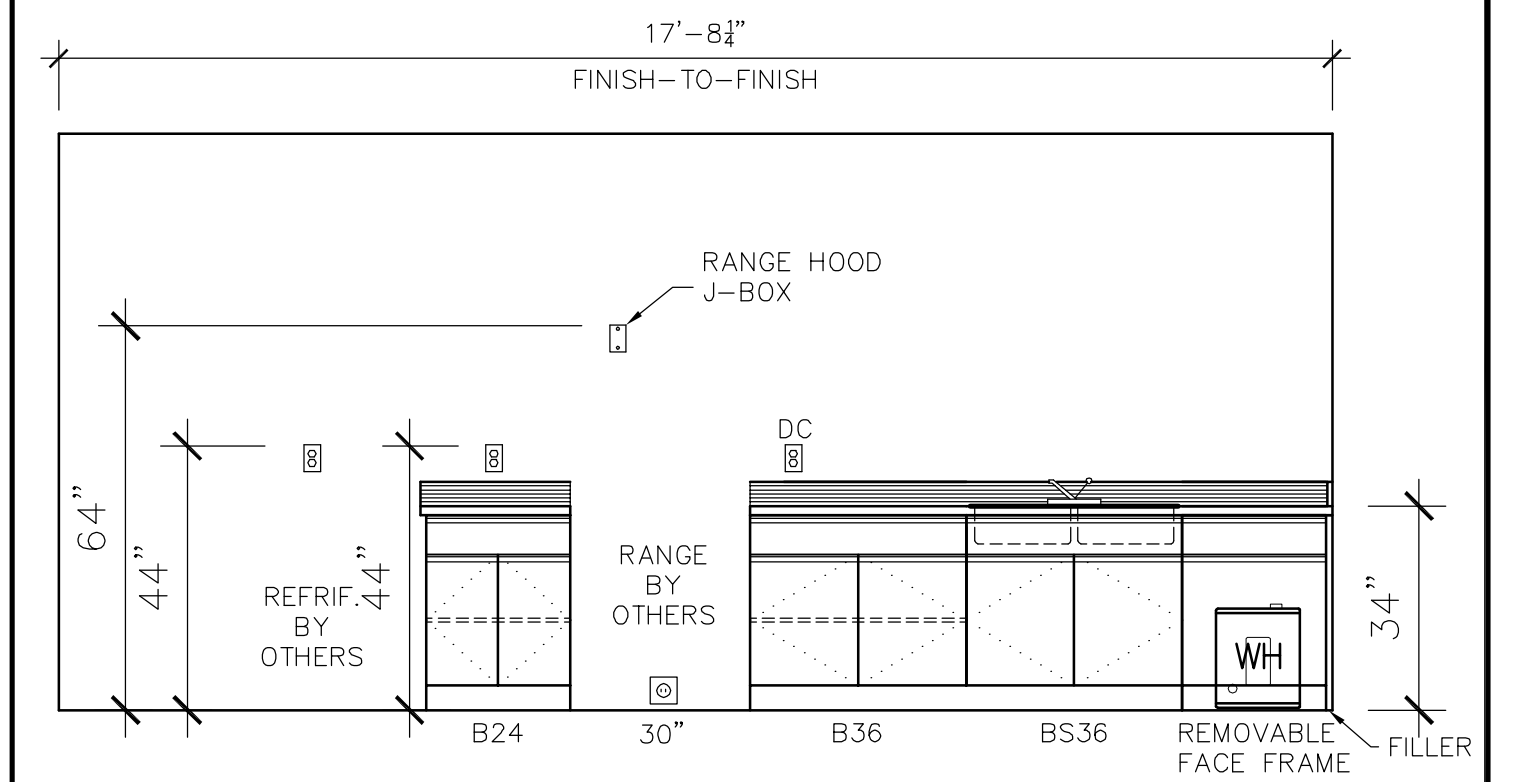
A RESTROOM ELEVATION
3/8" = 1'-0"



B RESTROOM ELEVATION
3/8" = 1'-0"

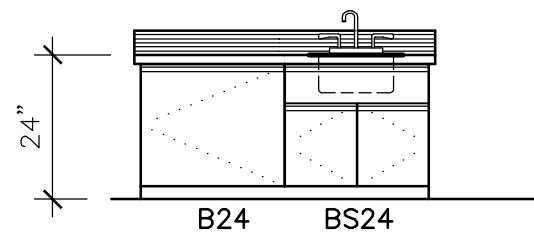


C RESTROOM ELEVATION
3/8" = 1'-0"

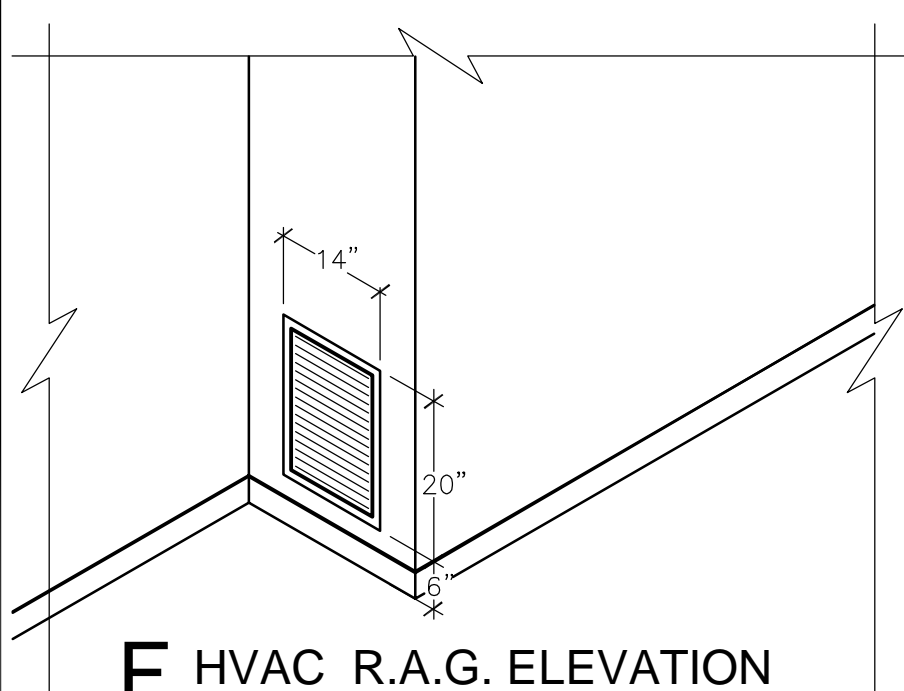


D KITCHEN ELEVATION
3/8" = 1'-0"

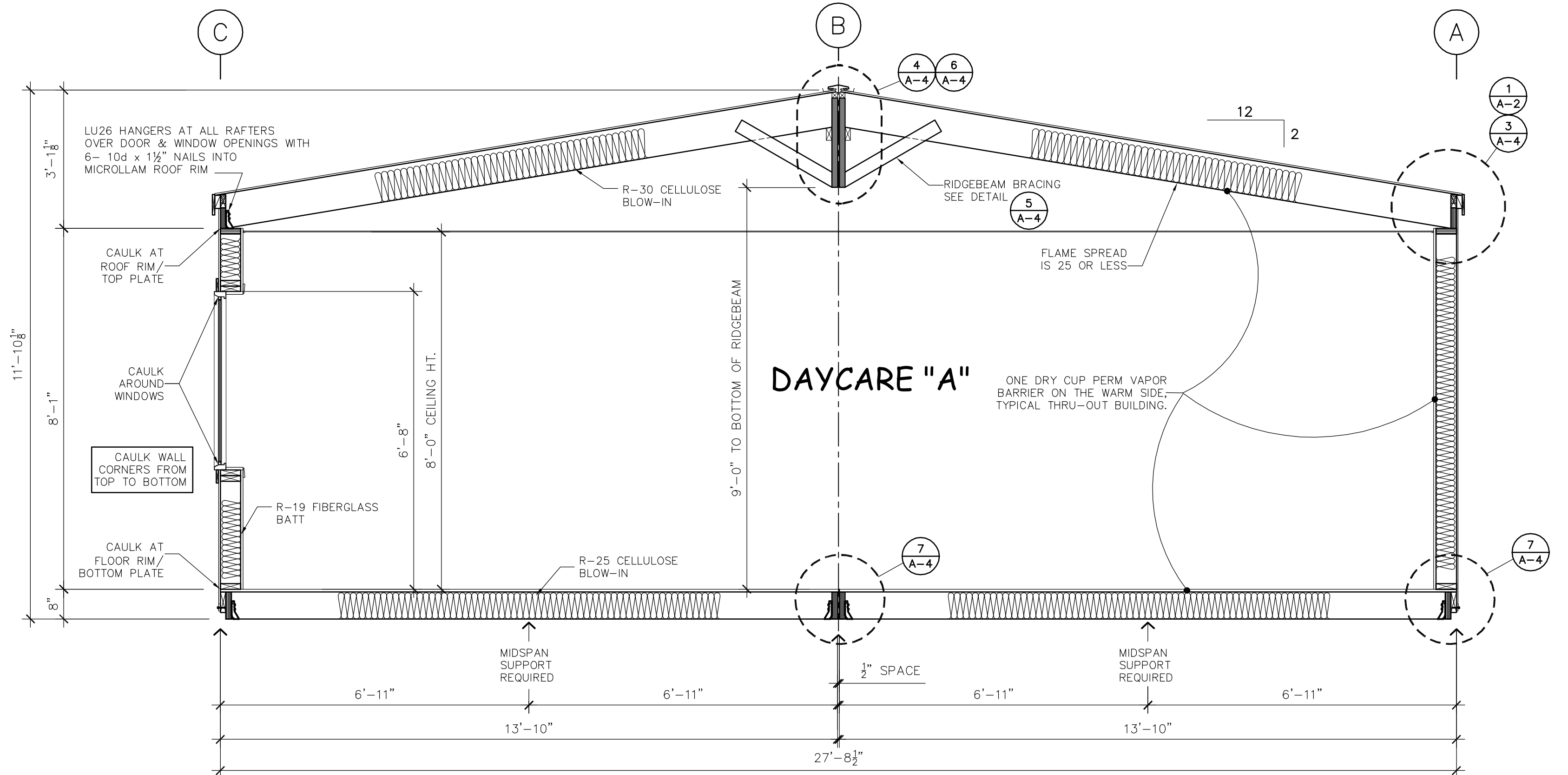
GENERIC LAYOUT - ACTUAL CABINETS BY LEMONS



E CABINET ELEVATION
3/8" = 1'-0"



F HVAC R.A.G. ELEVATION
1/2" = 1'-0"



SECTION - A-A
1/2" = 1'-0"

PRELIMINARY
NOT FOR CONSTRUCTION

COPYRIGHT 2009, BLAZER INDUSTRIES, INC. THIS MATERIAL IS THE EXCLUSIVE PROPERTY OF BLAZER INDUSTRIES, INC. AND SHALL NOT BE REPRODUCED, USED, OR DISCLOSED TO OTHERS EXCEPT AS AUTHORIZED BY THE WRITTEN PERMISSION OF BLAZER INDUSTRIES.



MODULAR
28 X 64
WA GOLD

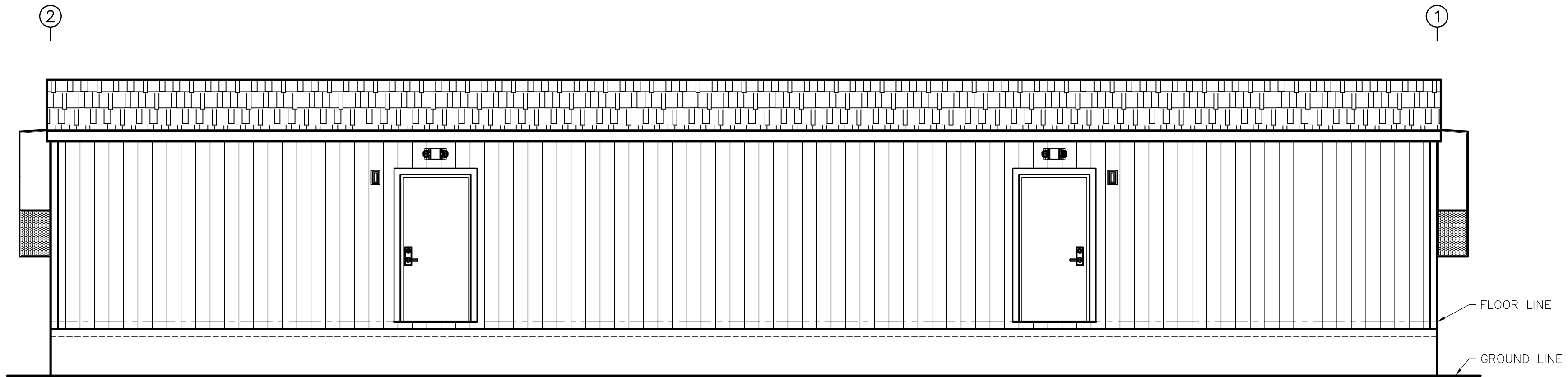
DAYCARE for:
LEASE UNIT
EQUIPMENT SUPPLY LLC

Approved for Const:
File Copy:
Drawn By: NS
Start Date: 11-25-08

Job No: D8201
A-2

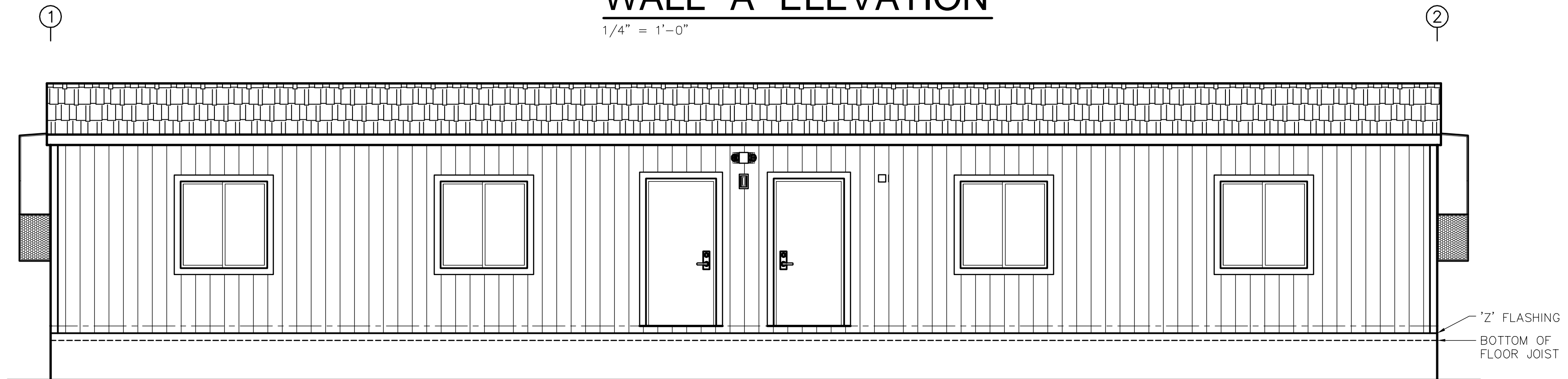
DATE	REVISION	BY

Washington



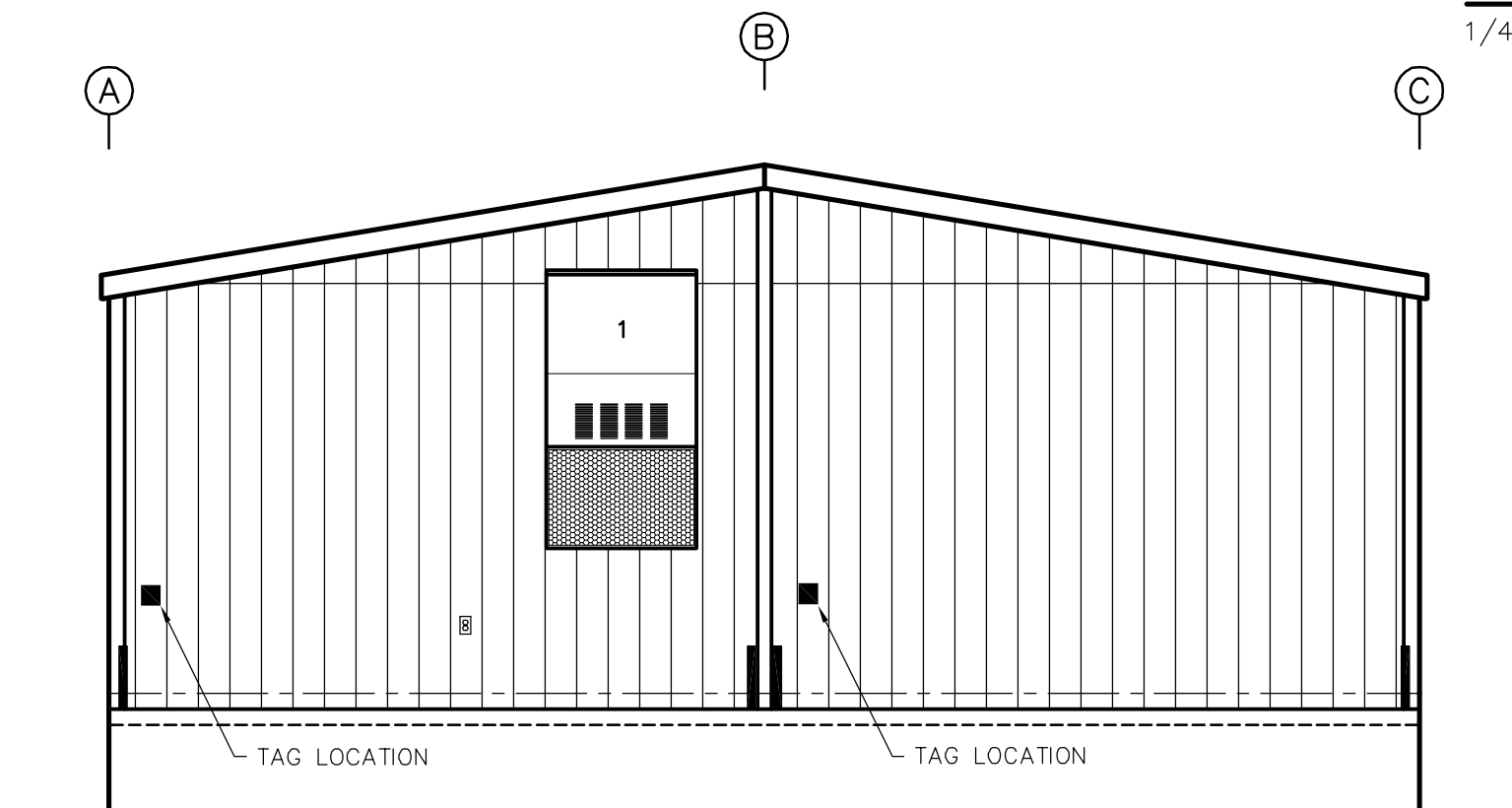
WALL "A" ELEVATION

1/4" = 1'-0"



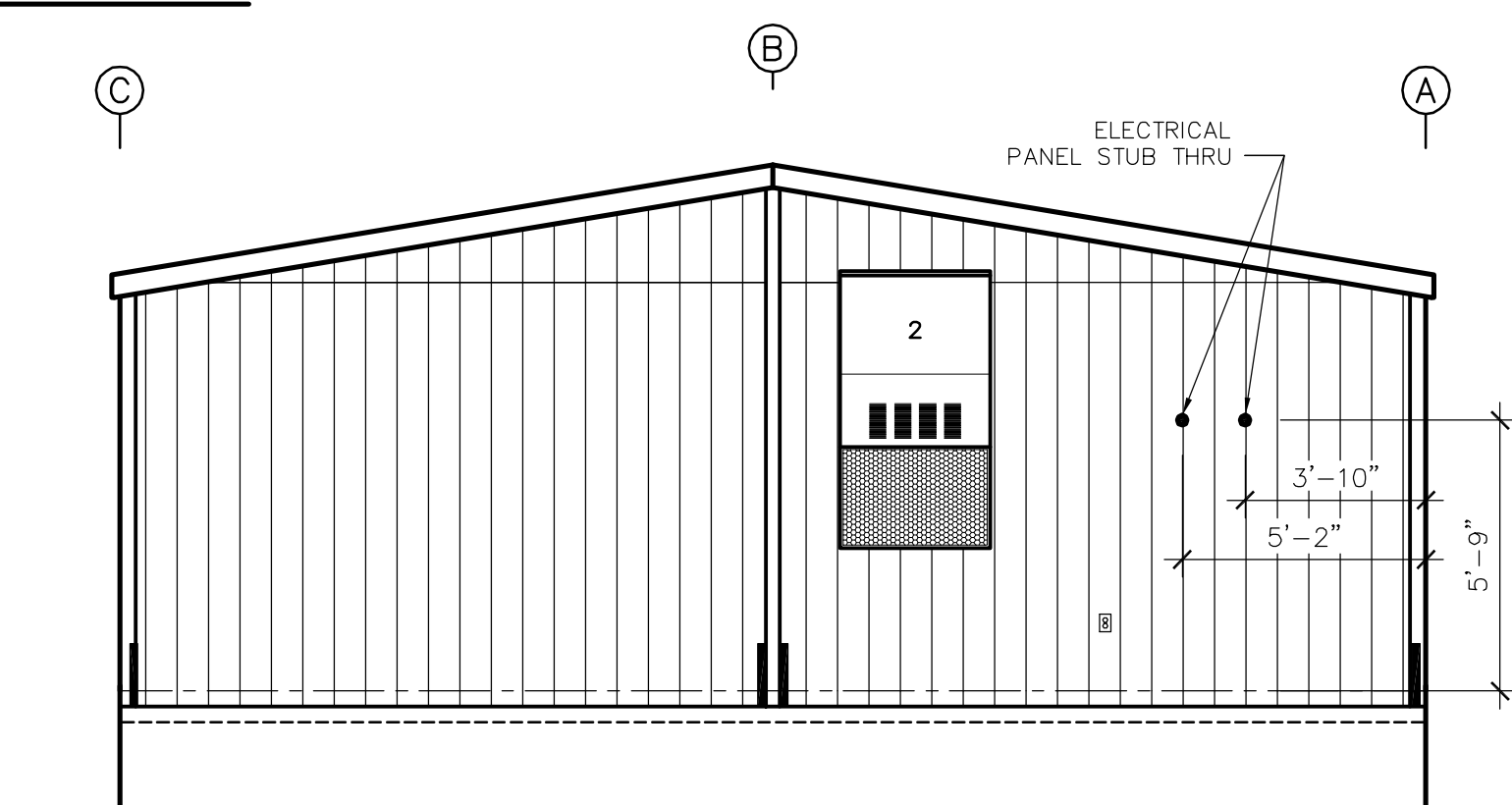
WALL "C" ELEVATION

1/4" = 1'-0"



WALL '1' ELEVATION

1/4" = 1'-0"



WALL '2' ELEVATION

1/4" = 1'-0"

PRELIMINARY
NOT FOR CONSTRUCTION

DATE	REVISION	BY

COPYRIGHT 2009, BLAZER INDUSTRIES, INC. THIS MATERIAL IS THE EXCLUSIVE PROPERTY OF BLAZER INDUSTRIES, INC. AND SHALL NOT BE REPRODUCED, USED, OR DISCLOSED TO OTHERS EXCEPT AS AUTHORIZED BY THE WRITTEN PERMISSION OF BLAZER INDUSTRIES.



MODULAR
28 x 64
WA GOLD

DAYCARE for:
LEASE UNIT
EQUIPMENT SUPPLY LLC

Washington

Approved for Const:	
File Copy:	
Drawn By:	NS
Start Date:	11-25-08

Job No: D8201
A-3