

FLOOR PLAN

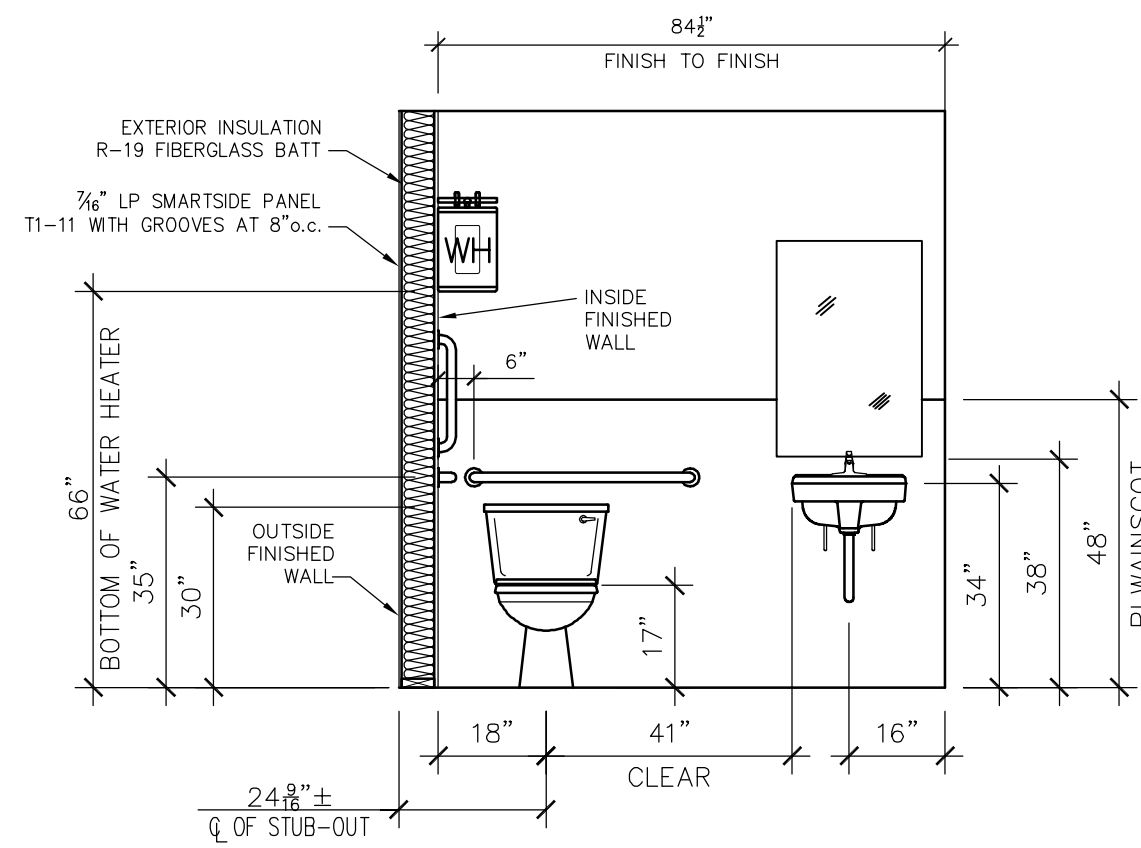
1/4" = 1'-0"

	QTY.	SIZE	DESCRIPTION	LOCK	REMARKS	
DOORS						
EXTERIOR DOOR HARDWARE TO HAVE #626 SATIN CHROMIUM PLATED FINISH.	1	2	3'0" x 6'8"	INSULATED GALV. STEEL W/ WELDED STEEL JAMB WEATHERSTRIPPING DEFAULT .60 U-FACTOR	SCHLAGE CYLINDER	SS BBH-NRP HINGES PAINT FINISH LCN 1461 CLOSER VON DUPRIN 22L PANIC
INTERIOR DOOR HARDWARE TO HAVE #605 BRIGHT BRASS FINISH.	2	2	3'0" x 6'8"	SOLIDCORE VINYLWRAP w/WOOD JAMB	LC2276 PRIVACY	STANDARD HINGES VWCO FINISH
INTERIOR DOORS TO BE 1 3/4" THICK.						
WINDOWS	4	48 x 48	HORIZ. SLIDER-DUAL GLAZE-LOW 'E' ATRIUM- WHITE VINYL FINISH-MINI BLIND- SOLAR BRONZE TINT NFRC .36 U-FACTOR - SHADING COEFFICIENT .38			

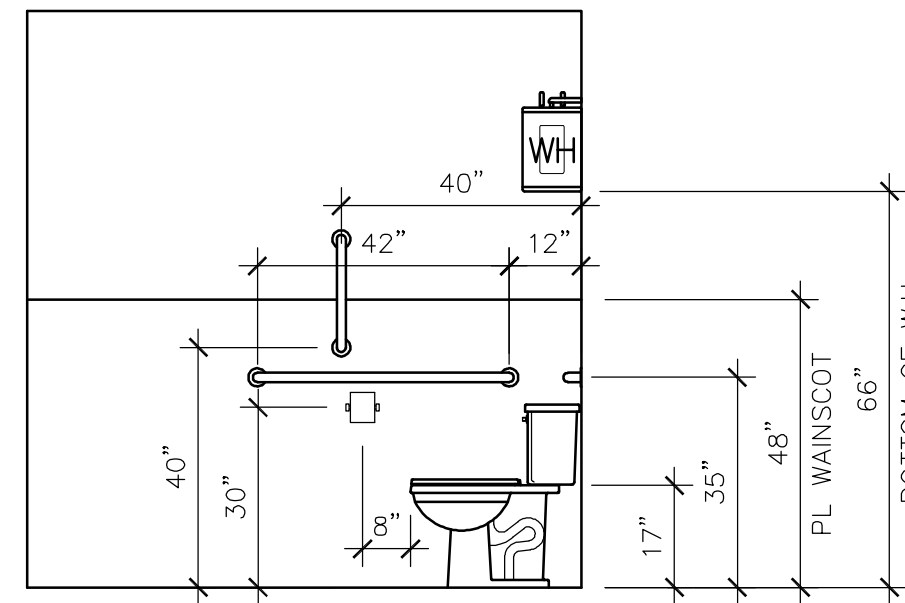
**PRELIMINARY
NOT FOR CONSTRUCTION**

DATE	REVISION	BY	COPYRIGHT 2009, BLAZER INDUSTRIES, INC. THIS MATERIAL IS THE EXCLUSIVE PROPERTY OF BLAZER INDUSTRIES, INC. AND SHALL NOT BE REPRODUCED, USED, OR DISCLOSED TO OTHERS EXCEPT AS AUTHORIZED BY THE WRITTEN PERMISSION OF BLAZER INDUSTRIES.	P.O. BOX 489 ■ AUMSVILLE, OR 97325-0489	MODULAR 28 X 64 WA GOLD	Classroom / H.C.R.R. for: Lease Unit EQUIPMENT SUPPLY LLC	Approved for Const: File Copy: Drawn By: NS Start Date: 11-24-08	Job No: D8110 A-1
------	----------	----	---	---	-------------------------------	--	---	------------------------------------

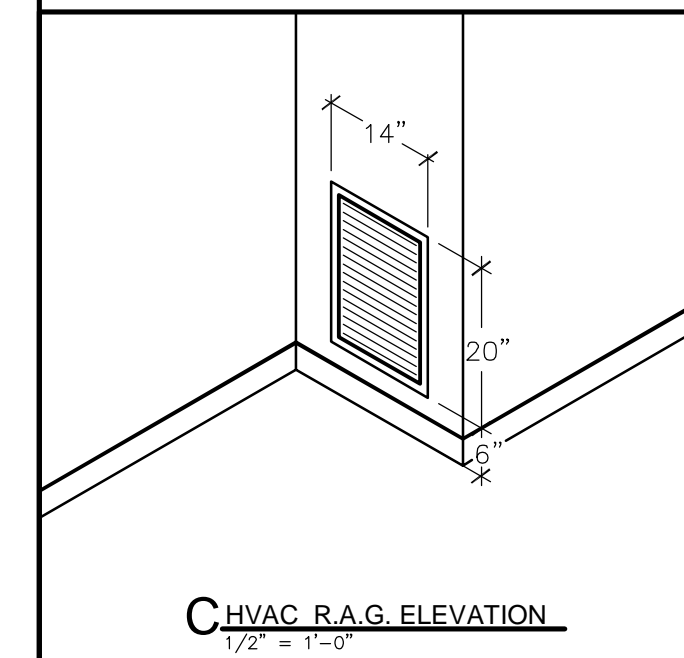
Washington



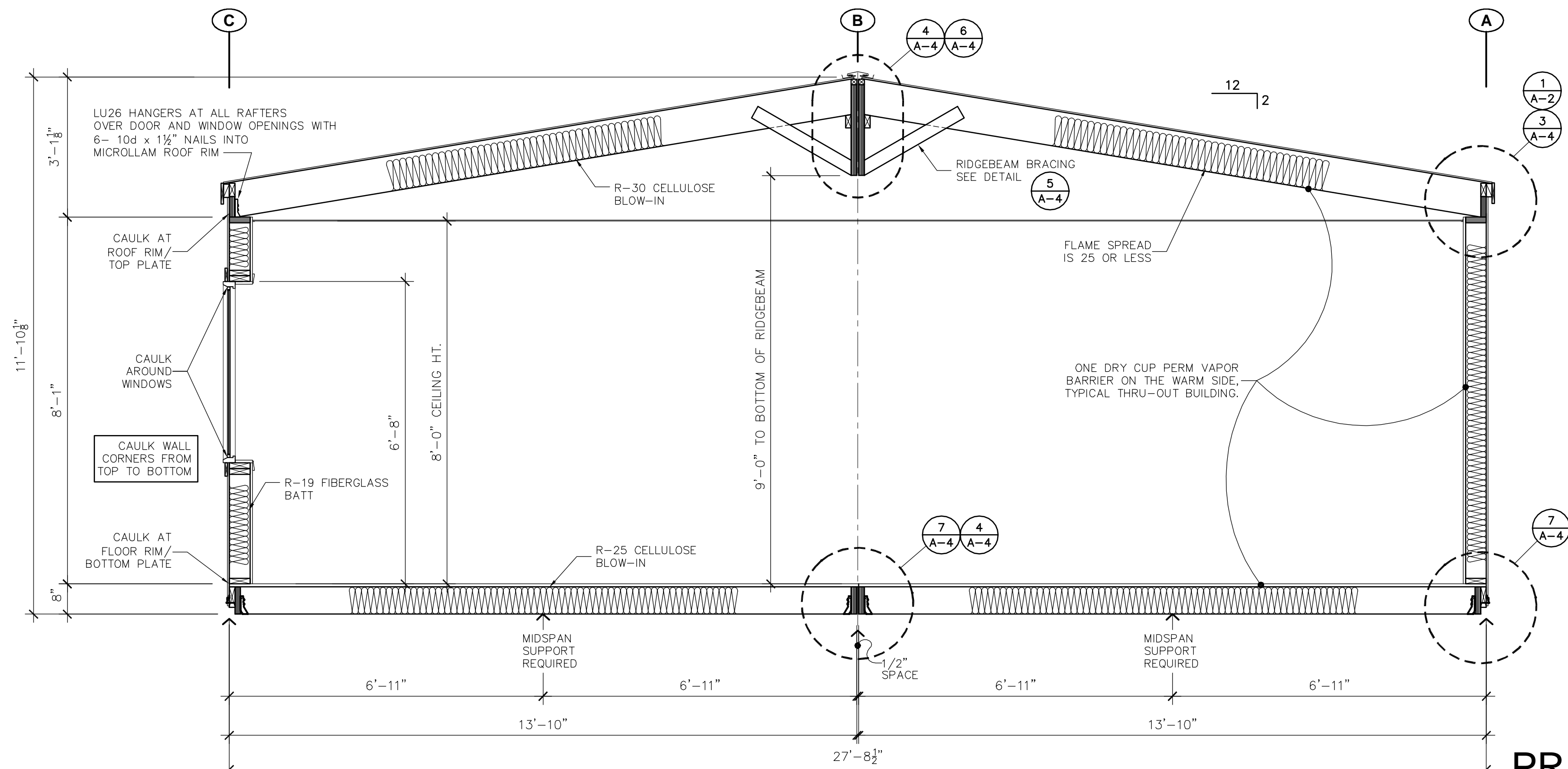
A RESTROOM ELEVATION
1/2" = 1'-0"



B RESTROOM ELEVATION
1/2" = 1'-0"



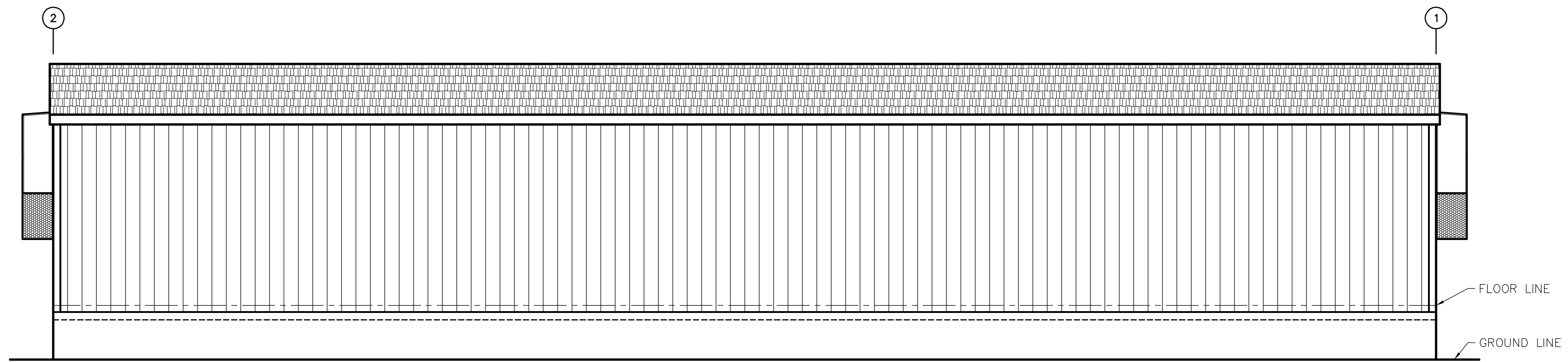
C HVAC R.A.G. ELEVATION
1/2" = 1'-0"



SECTION - A A
1/2" = 1'-0"

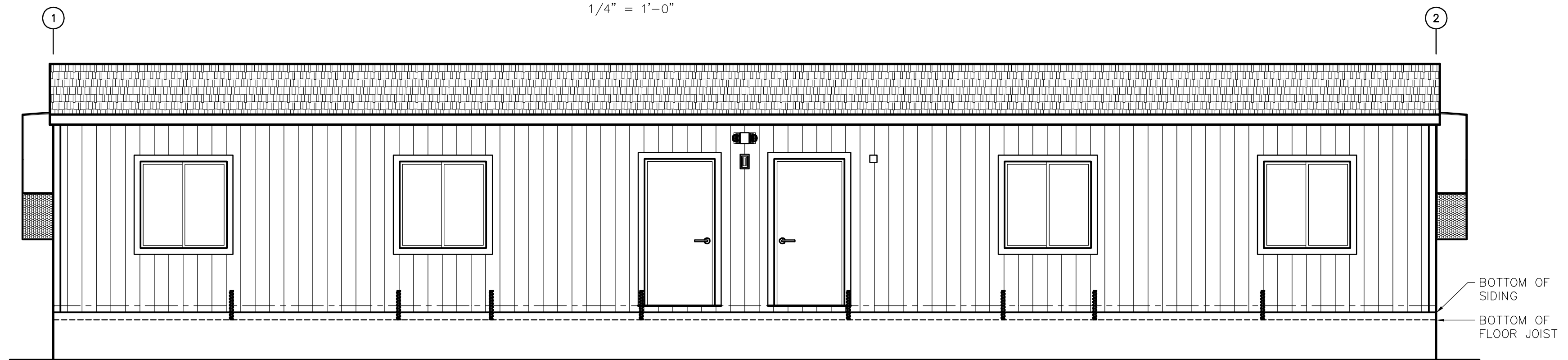
PRELIMINARY
NOT FOR CONSTRUCTION

COPYRIGHT 2009, BLAZER INDUSTRIES, INC. THIS MATERIAL IS THE EXCLUSIVE PROPERTY OF BLAZER INDUSTRIES, INC. AND SHALL NOT BE REPRODUCED, USED, OR DISCLOSED TO OTHERS EXCEPT AS AUTHORIZED BY THE WRITTEN PERMISSION OF BLAZER INDUSTRIES.					MODULAR 28 X 64 WA GOLD		Classroom / H.C.R.R. for: Lease Unit EQUIPMENT SUPPLY LLC		Approved for Const: File Copy: Drawn By: NS Start Date: 11-24-08		Job No: DB110 A-2	
DATE	REVISION	BY										



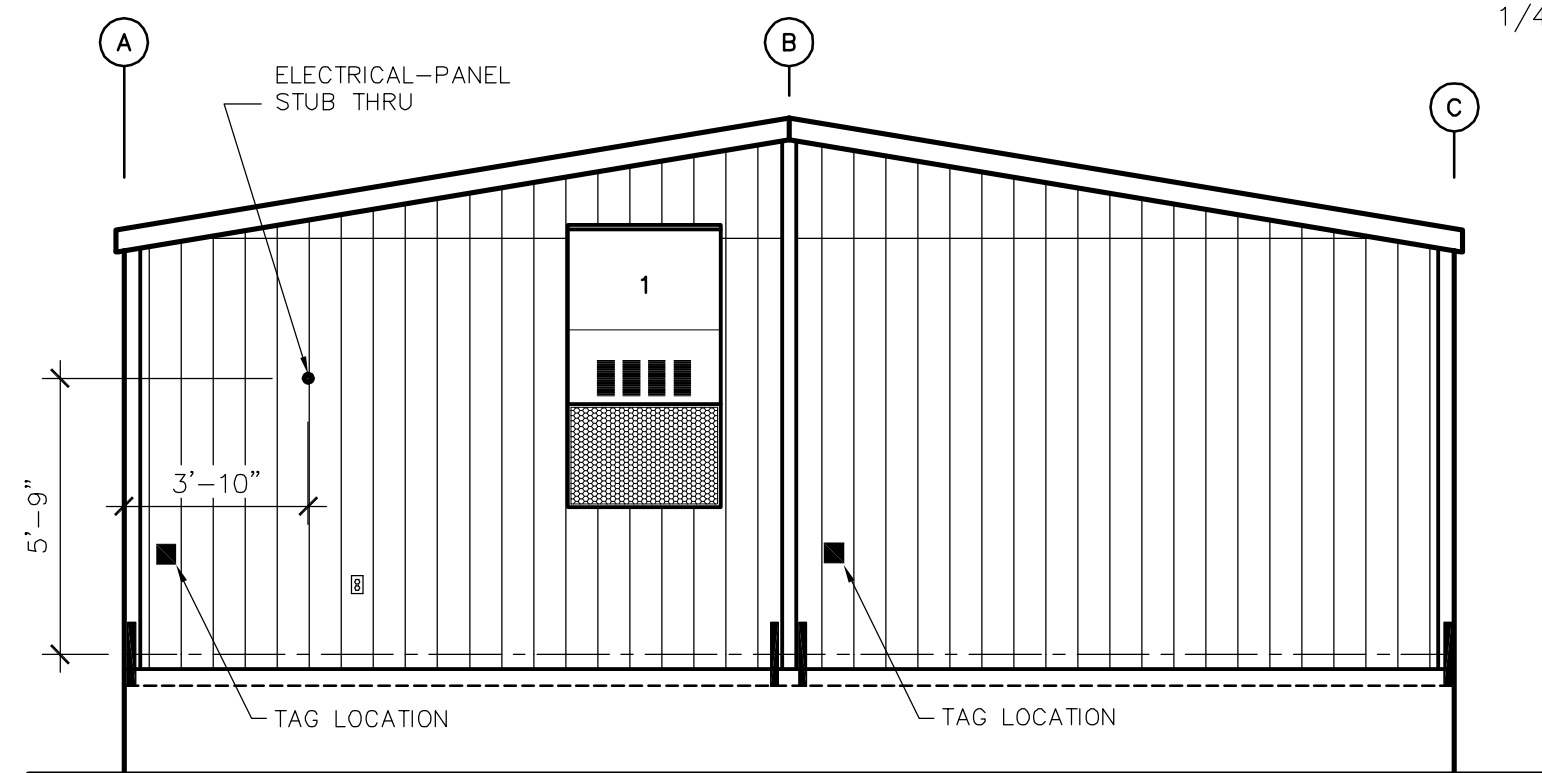
WALL 'A' ELEVATION

1/4" = 1'-0"



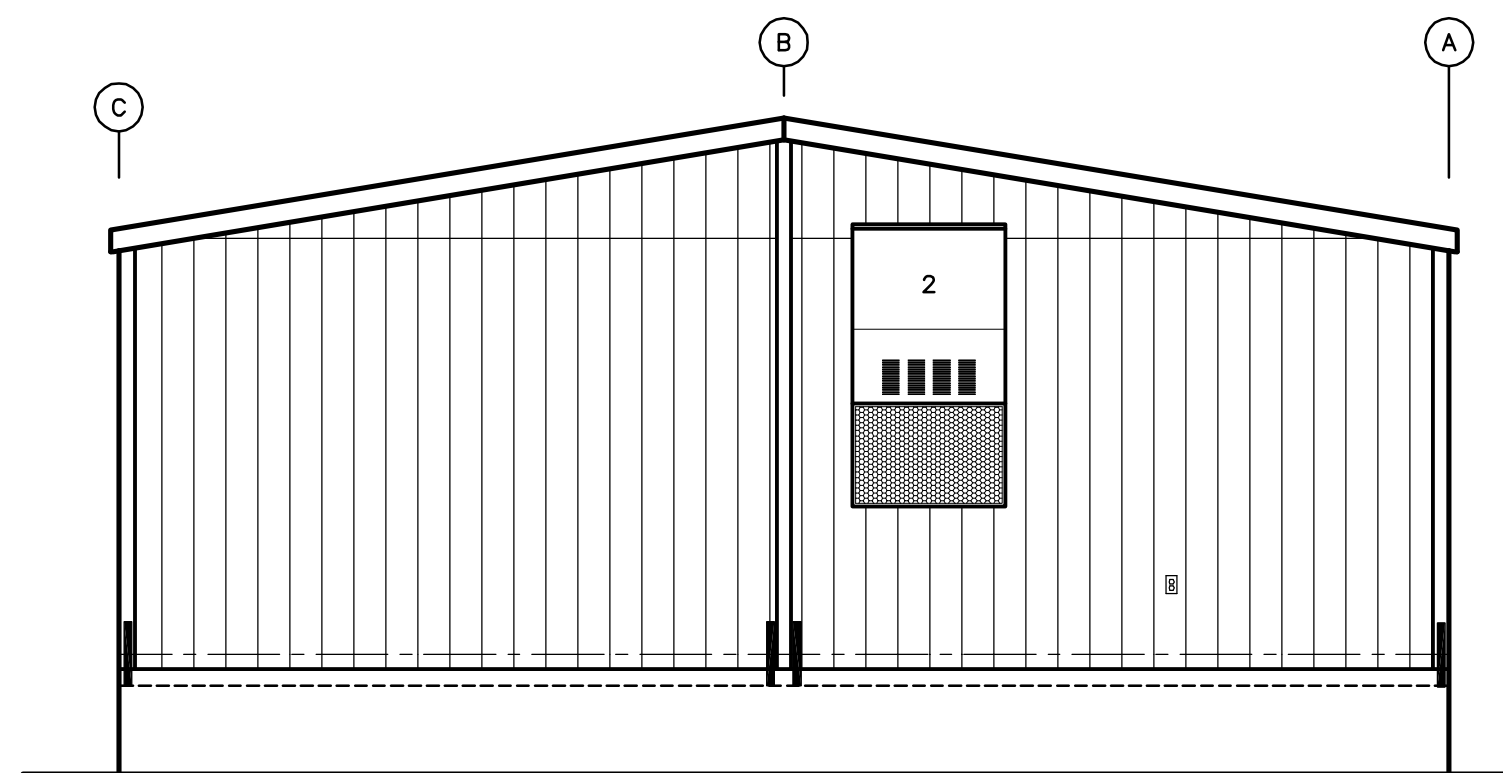
WALL 'C' ELEVATION

1/4" = 1'-0"



WALL '1' ELEVATION

1/4" = 1'-0"



WALL '2' ELEVATION

1/4" = 1'-0"

PRELIMINARY
NOT FOR CONSTRUCTION

COPYRIGHT 2009, BLAZER INDUSTRIES, INC. THIS MATERIAL IS THE EXCLUSIVE PROPERTY OF BLAZER INDUSTRIES, INC. AND SHALL NOT BE REPRODUCED, USED, OR DISCLOSED TO OTHERS EXCEPT AS AUTHORIZED BY THE WRITTEN PERMISSION OF BLAZER INDUSTRIES.					MODULAR 28 X 64 WA GOLD	<i>Classroom / H.C.R.R. for:</i> Lease Unit EQUIPMENT SUPPLY LLC	Approved for Const: File Copy: Drawn By: NS Start Date: 11-24-08	Job No: D8110 A-3
DATE	REVISION	BY				Washington		